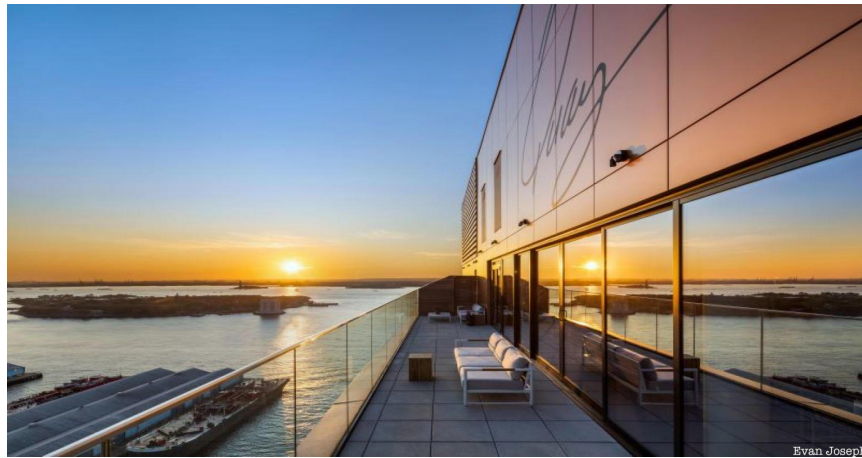


July 28, 2022  
Untapped New York

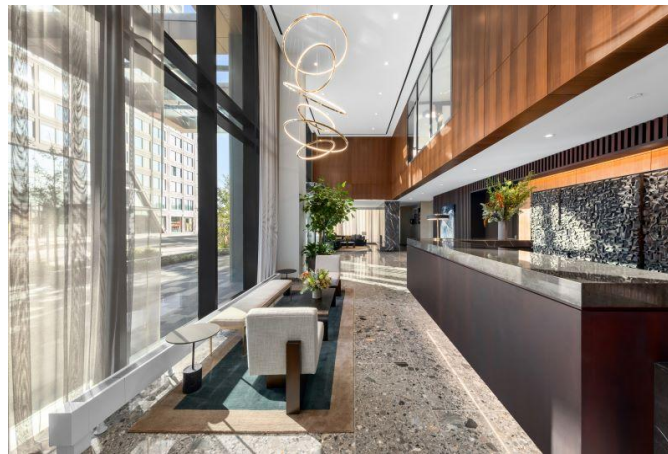
# untapped new york.

## DISCOVER QUAY TOWER, A STRIKING BUILDING IN BROOKLYN HEIGHTS

**501.3K** unique monthly visitors  
By: **Untapped Cities Staff**



Sitting on the waterfront, Quay Tower is located in [Brooklyn Bridge Park](#) in one of Brooklyn's leading picturesque neighborhoods. Notable architect Eran Chen of architectural firm ODA designed this striking condominium, which is clearly visible from parts of the Brooklyn Queens Expressway. The tower offers front-row views of the Manhattan skyline, New York Harbor, and [Downtown Brooklyn](#). The building and surrounding area feature lush walking paths, picnic fields, recreational spaces, and a marina with tranquil cobbled streets



**On August 24**, tour [Quay Tower Brooklyn](#), a condominium on the Brooklyn Bridge Park waterfront by architect Eran Chan of ODA. The SERHANT team, the real estate firm behind

Quay Tower, will show guests the residences and discuss the building's architecture, as well as highlights of the area from culture to cuisine to waterfront activities. Also, learn about the interiors designed by California-based modernist AD100 firm [Marmol Radziner](#). The tour is free for [Untapped New York Insiders](#) (and get your first month free with code JOINUS).

The building rises 30 stories with 126 homes ranging from two to five bedrooms. Residents have access to panoramic views from the rooftop's north-facing Sunset Lounge and south-facing Sky Cabana. The building also features grills and fireplaces, a fitness center with Peloton bikes and the first-ever partnership with Gleason's Boxing Gym, a children's center, a music room with a baby grand piano, and even Amazon smart home capabilities.



Chen and his team wrapped California modernist interiors in a metallic and glass façade. Radziner curated materials such as wide-plank oak flooring, custom oak millwork with custom drawer inserts, and leather-finished white princess quartzite kitchen countertops. The apartments also feature cast-stone double and single sinks by Apaiser, Alabastrino Rustico travertine marble, Calacatta Borghinin marble, White Venatino marble tiles, custom Italian cabinetry, smoked bronze custom hardware for the kitchen, and custom polished nickel bathroom fixtures manufactured by Da Vinci in Italy.

The building overlooks Brooklyn Bridge Park, an 85-acre park on the Brooklyn side of the [East River](#). The building's penthouse on the waterfront was sold for \$20.3 million, the borough's most expensive sale ever.



ONE°15 Brooklyn Marina is one of the city's premier waterfront destinations. The marina features over 100 berths for vessels up to 300 feet long, a Sailing Club and School, and community programs. Located just south of the Brooklyn Bridge across the East River from **Wall Street** and **South Street Seaport**, the marina is home to the city's largest community dock. In addition to a Harbor Club and a Sailing Club, the marina features two eateries: Estuary at ONE°15 and Ebb & Flow Bakery.



“Located on **Brooklyn Bridge Park**'s 85 acres, Quay Tower's combination of convenience, views, and spacious residences in a natural setting are more coveted than ever. We are thrilled to welcome new retail stores including the Brooklyn Heights-favorite Iris Cafe and Town Market adjacent to the building at Pier 6,” said Robert Levine, Chairman of RAL Companies.



Take a [tour of Quay Tower](#) on August 24. The tour is free for [Untapped New York Insiders](#) (and get your first month free with code JOINUS).

<https://untappedcities.com/2022/07/26/quay-tower-brooklyn-2/>